

BrakeCheck Standard

The BrakeCheck Standard is our portable, DVSA-approved brake tester, now with 99-test memory and secondary brake testing as standard.

The Bowmonk BrakeCheck Standard is a fully self-contained, user-friendly, portable brake tester, used by workshops, government traffic authorities and Authorised Test Facilities (ATF's) around the world to record the braking efficiency and percentage of braking imbalance of all classes of vehicle from a Motorcycle to an HGV, in a matter of minutes.

The BrakeCheck Standard is also approved by the DVSA for performing the quarterly voluntary brake tests now required as part of the interim safety inspections.

The Bowmonk BrakeCheck Standard measures braking efficiency of the Service Brake (Foot Brake), Hand Brake and Secondary Brake by recording the rate of deceleration from a speed of around 20 mph until the vehicle comes to rest. With 99-test memory built in, you can store and recall multiple results without overwriting or downloading after each test, making it suited to fleet and multi-vehicle inspections as well as single tests.



Designed to be self-compensating, the instrument will indicate on the LED screen when it is positioned level enough to perform a brake test, with a generous tolerance to ensure that this is easy to achieve.

The unit indicates whether the vehicle pulls to the left or right during braking. Test results can be viewed on the display panel or downloaded to a PC for saving or printing.

A printed report can also be produced at the time of testing using the portable infra-red printer.

The device operates on a rechargeable lithium-ion battery pack and will power-down after a period of inactivity to conserve energy.

Features & Benefits

- Portable
- DVSA-Approved
- Easy to Use
- For all Vehicle Classes
- Tests Service, Hand and Secondary Brake
- Stores up to 99 Test Results
- Suitable for ABS-equipped Vehicles
- Portable Printer Available
- Download Data to PC
- Printer, Carry Case and Software Available
- Motorcycle Mounting Bracket Available
- Measures Peak Deceleration Front/Rear
- Measures Average Deceleration Front/Rear
- Measures Peak Acceleration Left/Right
- Vehicle pulls Left/Right indication and value
- Calculates Brake Efficiency
- Calculates Stopping Distance (displayed in meters or, by special request, feet)
- Calculates Test Speed (displayed in km/h or, by special request, mph)
- Audio Signal
- Measures Ambient Temperature

System Specifications

Accuracy:	Accurate to +/-0.01g
Size:	170 x 80 x 35mm
Weight:	0.4kg (400g)
Power Supply:	Rechargeable Lithium-Ion Battery
Operating Current:	<20mA
Standby Current:	<5mA
Memory:	Stores up to 99 test results

Environmental Tests

Electrical Tests Passed for CE Marking Requirements.



BrakeCheck Model Variants

BOW801 - BrakeCheck Standard

Stores up to 99 test results across the service, hand and secondary brake tests, so multiple vehicles can be tested without overwriting or downloading after each one.

BOW801KIT - BrakeCheck Standard Kit

Includes a BOW801 BrakeCheck, a wireless printer, a spare printer paper roll and a carry case.

Testimonials



"We have been using the Bowmonk BrakeCheck for years on all our fleet vehicles, it saves us having to lose our lorry for a full day to leaving them at an ATF which cost the company a full day's revenue, now we can do all our tests on site and at our own convenience. We have saved thousands of pounds a year."

Paul Bailey,
Fleet Workshop Manager at Tarmac.



"We use the BrakeCheck in all our depots for a number of years now, they are easy to use and very robust, reliability is key to our equipment as road tests are a daily occurrence and without a decelerometer we can't do that test."

Terry Roughton,
Depot Manager at Kwik Fit.

Accessories

BOW805 - Infrared Printer

This wireless infrared printer, enclosed in a ruggedized rubber casing, allows the BrakeCheck to print brake test results after each test. The printer is supplied with a charger, with an appropriate plug for the destination country.

BOW813 - Rugged Carry Case

A sturdy carry case for the BrakeCheck and its charger, which also accommodates the BOW805 wireless printer (& its charger), a spare printer paper roll, and a USB stick. Note - part code BOW813 is for the carry case only. A complete kit, including BrakeCheck and printer, can be ordered under part code BOW801KIT.

BOW811 - Handle Bar Bracket & Clamp

The handle bar bracket & clamp allows the BrakeCheck to be securely mounted to the handlebar or front bull bar of a motorcycle or quad/ATV in order to carry out brake tests. The combined BrakeCheck with handle bar bracket & clamp (part codes BOW801 & BOW811) is fully DVSA-approved for the testing of brakes on these types of vehicle (Class I & Class II), including for vehicles with ABS or linked braking systems.

BOW810 - BCPrint Software

Downloadable software to view and save all results from all BrakeCheck variants, this can be printed on your own desktop printer or saved to a local drive/network, Note this will only work on Windows operating systems.

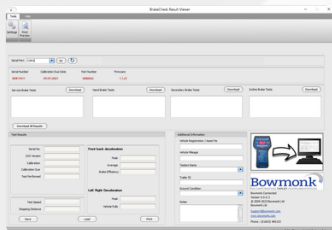
Additional Images



Infrared Printer



BrakeCheck Kit



BC Print



Motorcycle Bracket

BrakeCheck	
Serial No:	BRK18001
S/W Version:	1.1.13
Company ID:	BOWMONK LTD
Log memory:	1
Test Performed:	13:19:44 09/12/2015
Timezone:	GMT (0000)
Service Brake Test	
Front-Back Deceleration	
Peak:	58 %g
Average:	36 %g
Left-Right Acceleration	
Peak:	1 %g
Vehicle pulls:	RIGHT
Test Speed:	16 km/h
Stopping Dist:	2.8 m
Brake Efficiency:	35 %
Calibration Ok	Due: 29/11/2017
.....	Trailer ID
.....	Vehicle Registration
.....	Ground Condition
.....	Inspector Name
.....	Signature

Example Printout