

BrakeCheck TT

The BrakeCheck TT is our portable, DVSA-approved Brake Tester Designed for Tractor Unit & Rigid Truck Brake Testing with a 99 Test Memory Per Brake Type (297 Test Memory in Total).

This BrakeCheck has an additional Trailer Brake Testing function Provided Strictly For Internal Fleet Inspection, Maintenance and Record Keeping. Has a 99 Test Memory Per Brake Type (297 Test Memory in Total).

This makes the BrakeCheck TT suitable for HGV fleet operators, workshops, and maintenance teams who need a practical on-road brake testing tool to support inspections and preventative maintenance, without claiming DVSA approval for trailer testing.

The BrakeCheck TT determines braking efficiency of both the Service Brake (Foot Brake) and Hand Brake by measuring the rate of deceleration from a speed of around 20 mph until the vehicle comes to rest.



Designed to be self-compensating, the instrument will indicate on the LED screen when it is positioned level enough to perform a brake test, with a generous tolerance to ensure that this is easy to achieve.

Developed for articulated and mixed-fleet operations, the BrakeCheck TT allows operators to assess tractor unit and rigid truck service brakes and handbrakes (DVSA-approved use), while also providing useful internal reference data on trailer brake performance as part of routine fleet maintenance.

The unit indicates whether the vehicle pulls to the left or right during braking. Test results can be viewed on the display panel or downloaded to a PC for saving or printing. A printed report can also be produced at the time of testing using the portable infra-red printer.

The device operates on a rechargeable lithium-ion battery pack and will power-down after a period of inactivity to conserve energy.

Features & Benefits

- Portable
- DVSA-Approved
- Easy to Use
- For Rigid Trucks & Trailers
- Tests Service and Hand Brake
- Trailer Brake Testing for Internal Fleet Reference Only
- 99 Test Memory for Service Brake, Hand Brake & Trailer Brake (297 Tests Total)
- Designed for Use with Fleets of Vehicles
- Portable Printer Available
- Download Data to PC
- Printer, Carry Case and Software Available
- Measures Peak Deceleration Front/Rear
- Measures Average Deceleration Front/Rear
- Measures Peak Acceleration Left/Right
- Vehicle pulls Left/Right indication and value
- Calculates Brake Efficiency
- Calculates Stopping Distance (displayed in meters or, by special request, feet)
- Calculates Test Speed (displayed in km/h or, by special request, mph)
- Audio Signal
- Measures Ambient Temperature

System Specifications

Accuracy:	Accurate to +/-0.01g
Size:	170 x 80 x 35mm
Weight:	0.4kg (400g)
Power Supply:	Rechargeable Lithium-Ion Battery
Operating Current:	<20mA
Standby Current:	<5mA

Environmental Tests

Electrical Tests Passed for CE Marking Requirements.



BrakeCheck Model Variants

BOW820 - BrakeCheck TT (Truck & Trailer)

Stores 99 Service Brake, & 99 Hand Brake & 99 Trailer Brake Tests into Memory (297 Total Test Memory).

The BrakeCheck TT (Trailer Test) is very similar to the standard BrakeCheck unit, but has the facility to display separate results for the truck and trailer braking efficiencies.

BOW820KIT - BrakeCheck TT Kit

Includes a BOW820 BrakeCheck TT, a wireless printer, a spare printer paper roll and a carry case.

Testimonials



"We have been using the Bowmonk BrakeCheck for years on all our fleet vehicles, it saves us having to lose our lorry for a full day to leaving them at an ATF which cost the company a full day's revenue, now we can do all our tests on site and at our own convenience. We have saved thousands of pounds a year."

Paul Bailey,
Fleet Workshop Manager at Tarmac.



"We use the BrakeCheck in all our depots for a number of years now, they are easy to use and very robust, reliability is key to our equipment as road tests are a daily occurrence and without a decelerometer we can't do that test."

Terry Roughton,
Depot Manager at Kwik Fit.

Accessories

BOW805 - Infrared Printer

This wireless infrared printer, enclosed in a ruggedized rubber casing, allows the BrakeCheck to print brake test results after each test. The printer is supplied with a charger, with an appropriate plug for the destination country.

BOW813 - Rugged Carry Case

A sturdy carry case for the BrakeCheck and its charger, which also accommodates the BOW805 wireless printer (& its charger), a spare printer paper roll, and a USB stick. Note - part code BOW813 is for the carry case only. A complete kit, including BrakeCheck and printer, can be ordered under part code BOW801KIT.

BOW810 - BCPrint Software

Downloadable software to view and save all results from all BrakeCheck variants, this can be printed on your own desktop printer or saved to a local drive/network, Note this will only work on Windows operating systems.

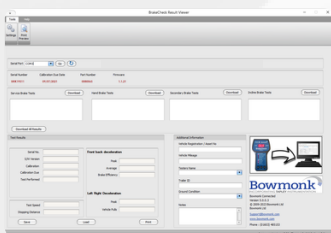
Additional Images



Infrared Printer



BrakeCheck Kit



BC Print